



The following table lists the pre-consumer recycled content in each of our Porcelain Stone® products. Crossville® became the first tile manufacturer to achieve certification of its waste recycling programs through an independent, third-party certifier of recycled claims. While we don't certify our recycled content today, our products continue to be manufactured using the EcoCycle Tile Process™. Every product made at our facilities is Green Squared<sup>SM</sup> Certified (ANSI A138.1 multi-attribute sustainability standard). Crossville continues to drive sustainability into the mainstream as it has since 1986.

ACCESS POINT™			
15%	🟢	WBS01	Statuario
15%	🟢	WBT01	White Travertine
15%	🟢	WBT02	Sand Travertine
15%	🟢	WBT03	Dove Travertine
15%	🟢	WBT04	Ash Travertine
15%	🟢	WBC01	White Concrete
15%	🟢	WBC02	Sand Concrete
15%	🟢	WBC03	Dove Concrete
15%	🟢	WBC04	Ash Concrete

ALASKA™			
15%	🟢	ASK01	Ice
15%	🟢	ASK02	Bone
15%	🟢	ASK03	Mink
15%	🟢	ASK04	Glacier
15%	🟢	ASK05	Tundra

ALTERED STATE™			
15%	🟢	AV341	White Hot
15%	🟢	AV342	Steel Gaze
15%	🟢	AV343	Acid Wash
15%	🟢	AV344	Copper Core
15%	🟢	AV345	Melting Point

ARGENT 2.0™			
10%	🟢	ARG01	A1405 Winter Garden
10%	🟢	ARG15	A1415 Memphis Blues
10%	🟢	ARG17	A1417 Clean Slate
10%	🟢	ARG18	A1418 Concrete Jungle
10%	🟢	ARG20	A1420 On the Rocks
10%	🟢	ARG31	White Tiger
10%	🟢	ARG32	Silver Sage
10%	🟢	ARG33	Grey Tabby
10%	🟢	ARG34	Marble Faun
10%	🟢	ARG35	Golden Glow
10%	🟢	ARG36	Sunkissed Rose
10%	🟢	ARG37	Night Sky
10%	🟢	ARG38	Enchanted Forest

ARGENT 2.5™			
10%	🟢	ARG05	Hollywood & Vine
10%	🟢	ARG09	Lemon Drop
10%	🟢	ARG10	Orange Crush
10%	🟢	ARG12	Chicago Fire
10%	🟢	ARG16	Grapes of Wrath

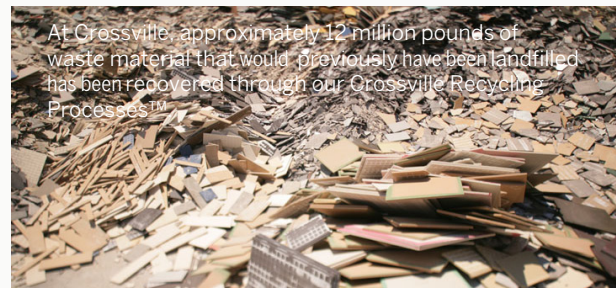
BASALT™			
10%	🟢	AV291	Silica
10%	🟢	AV292	Caldera
10%	🟢	AV293	Bedrock
10%	🟢	AV294	Mafic
10%	🟢	AV295	Magma

BELJN™			
15%	🟢	BJN01	Toasted Waffle*
15%	🟢	BJN02	Platinum Solitaire*
15%	🟢	BJN03	Castle Stone*
15%	🟢	BJN04	Canal Gray*
15%	🟢	BJN05	Black Iron*

\* Recycled content is the same for both UPS and EXT finishes

CIVILIZATION™			
15%	🟢	CIV01	Census*
15%	🟢	CIV02	Populace*
15%	🟢	CIV03	Communique*
15%	🟢	CIV04	Currency*
15%	🟢	CIV05	Power*
15%	🟢	CIV06	Legality*

\* Recycled content is the same for both UPS and SPO finishes



At Crossville, approximately 12 million pounds of waste material that would previously have been landfilled has been recovered through our Crossville Recycling Processes™.

🟢 Pre-consumer recycled material in the body

Listed percentage is the **minimum** recycled content in each product. Actual recycled content may be greater

COLOR BLOX 2.0™			
10%	♣	CBX01	A1101 Sandbox
10%	♣	CBX03	A1103 Slinky
10%	♣	CBX07	A1107 Mud Pie
10%	♣	CBX08	A1108 Sea Otter
10%	♣	CBX13	A1113 Blue Suede Shoes
10%	♣	CBX14	A1114 Tree House
10%	♣	CBX17	A1117   See the Moon
10%	♣	CBX31	Cotton Sheets
10%	♣	CBX32	Boot Black
10%	♣	CBX33	Wet Clay
10%	♣	CBX34	Spring Sage
10%	♣	CBX35	Celestial Horizon
10%	♣	CBX36	Just Ducky
10%	♣	CBX37	Cayenne
10%	♣	CBX38	Camping Out

CROSS COLORS MINGLES™			
10%	♣	A825	Mercury
10%	♣	A233	Sand Bisque
10%	♣	A675	Stonehenge
10%	♣	A900	Mica
10%	♣	A750	Brown Tweed
10%	♣	A790	Burgundy Smoke
10%	♣	A850	Graphite
10%	♣	A880	Onyx
10%	♣	R001	Gray Mingle

CLEVE™			
15%	♣	CLV01	Ivory Ridge
15%	♣	CLV02	Strata Beige
15%	♣	CLV03	Shadow Glen
15%	♣	CLV04	Iron Hollow

GOTHAM™			
15%	♣	AV321	Lamp Post
15%	♣	AV322	Penthouse
15%	♣	AV323	Clock Tower
15%	♣	AV324	Mainline
15%	♣	AV352	Dockside
15%	♣	AV326	Pavement

JAVA JOINT™			
15%	♣	JAV01	Two Sugars
15%	♣	JAV02	Flat White
15%	♣	JAV03	House Blend
15%	♣	JAV04	Fresh Ground
15%	♣	JAV05	French Press

MAIN STREET™			
15%	♣	AV211	Cinema Champagne
15%	♣	AV212	Cafe Caramel
15%	♣	AV213	Bistro Brown
15%	♣	AV214	Gallery Grey
15%	♣	AV215	Boutique Black

NATIVE METAL™			
15%	♣	NVM01	Noble Platinum
15%	♣	NVM02	Nickel Plate
15%	♣	NVM03	Crucible Steel
15%	♣	NVM04	Copper Deposit
15%	♣	NVM05	Cobalt Ore
15%	♣	NVM06	Graphite Black

NEST™			
15%	♣	AV351	Levity Oak
15%	♣	AV352	Joyous Oak
15%	♣	AV353	Blissful Oak
15%	♣	AV354	Mindful Oak
15%	♣	AV355	Peaceful Oak
15%	♣	AV356	Slumber Oak
15%	♣	AV357	Meditative Oak
15%	♣	AV361	Levity Olive
15%	♣	AV362	Joyous Olive
15%	♣	AV363	Blissful Olive
15%	♣	AV364	Mindful Olive
15%	♣	AV365	Peaceful Olive
15%	♣	AV366	Slumber Olive
15%	♣	AV367	Meditative Olive

♣ Pre-consumer recycled material in the body

Listed percentage is the **minimum** recycled content in each product. Actual recycled content may be greater

# Recycled Content Porcelain Stone®



CrossvilleInc.com

NOTORIOUS™			
15%	♣	NTR01	Femme Fatale*
15%	♣	NTR02	Private Eye*
15%	♣	NTR03	Sugar Daddy*
15%	♣	NTR04	Suspense*
15%	♣	NTR05	Leading Man*
15%	♣	NTR06	Film Noir*
* Recycled content is the same for both UPS and HON finishes			

OWEN STONE™			
15%	♣	OST01	Down*
15%	♣	OST02	Bunny*
15%	♣	OST03	Slipper*
15%	♣	OST04	Mittens*
15%	♣	OST05	Sable*
15%	♣	OST06	Teddy*
* Recycled content is the same for UPS, LTR and EXT finishes			

PORTUGAL™			
15%	♣	PTG01	Velho White*
15%	♣	PTG02	Grand Rose*
15%	♣	PTG03	Venho Verde*
15%	♣	PTG04	Tinta Negra*
15%	♣	PTG05	Harvest Tawny*
15%	♣	PTG06	Madiera Reserve*
* Recycled content is the same for both UPS and EXT finishes			

PORTLAND CLIFF™			
15%	♣	PDC01	Sheer*
15%	♣	PDC02	Bluff*
15%	♣	PDC03	Echo*
15%	♣	PDC04	Ashlar*
15%	♣	PDC05	Cavern*
* Recycled content is the same for both UPS and EXT finishes			

READY TO WEAR™			
15%	♣	AV311	Buttoned Up
15%	♣	AV312	Hand in Glove
15%	♣	AV313	Off the Cuff
15%	♣	AV314	Perfect Fit
15%	♣	AV315	Decked Out
15%	♣	AV316	Smarty Pants
15%	♣	AV317	Flannel Suit
15%	♣	AV318	Hats Off

RETROACTIVE 2.0™			
10%	♣	RET01	Antico Taupe*
10%	♣	RET02	Seal Taupe*
10%	♣	RET03	Featherstone*
10%	♣	RET04	Empress White*
0%	♣	RET05	Snow Blind*
10%	♣	RET06	Roasted Chestnut*
10%	♣	RET07	Leaden*
10%	♣	RET08	Mercurial*
10%	♣	RET09	Phantom*
10%	♣	RET10	Armor*
10%	♣	RET11	Gulf Breeze*
10%	♣	RET12	Racing Green*
10%	♣	RET13	Royal Navy*
* Recycled content is the same for UPS, PO, and PTN finishes			

REUNITED™			
15%	♣	RNT01	Apuano
15%	♣	RNT02	Oro
15%	♣	RNT03	Avorio*
* Recycled content is the same for both FST and EXT finishes			

RURAL RETREAT™			
15%	♣	RRL01	Daybreak*
15%	♣	RRL02	Sunrise*
15%	♣	RRL03	Midday*
15%	♣	RRL04	Twilight*
15%	♣	RRL05	Dusk*
* Recycled content is the same for both UPS and EXT finishes			

SAND GARDEN™			
15%	♣	SDG01	Contemplative Cream*
15%	♣	SDG02	Meditative Mushroom*
15%	♣	SDG03	Thoughtful Taupe*
15%	♣	SDG04	Profound Pewter*
* Recycled content is the same for both UPS and SPO finishes			

♣ Pre-consumer recycled material in the body

Listed percentage is the **minimum** recycled content in each product. Actual recycled content may be greater

# Recycled Content Porcelain Stone®



SHADES 2.0™			
10%	♣	SHD41	Frost*
10%	♣	SHD42	Vapor*
10%	♣	SHD43	Fog*
10%	♣	SHD44	Mist*
10%	♣	SHD45	Clay*
10%	♣	SHD46	Ash*
10%	♣	SHD47	Haze*
10%	♣	SHD48	Thunder*
10%	♣	SHD49	Ink*
10%	♣	SHD51	Foam*
10%	♣	SHD52	Camel*
10%	♣	SHD53	Russet*
10%	♣	SHD54	Midnight*

\* Recycled content is the same for UPS and SPO finishes

SOCIALE™			
15%	♣	SCL01	Zecevo*
15%	♣	SCL02	Taj Mahal*
15%	♣	SCL03	Cristallo*
15%	♣	SCL04	Augustus Grey*
15%	♣	SCL05	Bronze Amani*
15%	♣	SCL06	Diamond Black*

\* Recycled content is the same for both FST and EXT finishes

STONE FICTION™			
15%	♣	STF01	Travertine Ivory*
15%	♣	STF02	Travertine Beige*
15%	♣	STF03	Travertine Silver*
15%	♣	STF04	Travertine Coffee*

\* Recycled content is the same for both UPS and EXT finishes

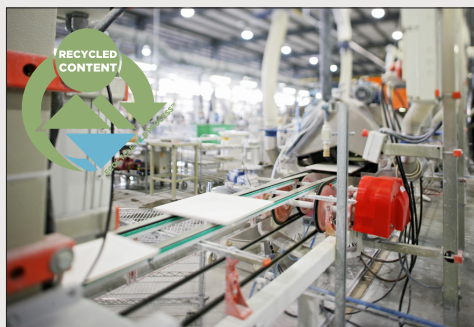
TRAJECTORY™			
15%	♣	TRY01	Path*
15%	♣	TRY02	Direction*
15%	♣	TRY03	Flight*
15%	♣	TRY04	Flow*

\* Recycled content is the same for both UPS and EXT finishes

♣ Pre-consumer recycled material in the body  
Listed percentage is the **minimum** recycled content in each product.  
Actual recycled content may be greater

## Green Squared Certified

Crossville® has earned Green Squared<sup>SM</sup> certification from the Tile Council of North America (TCNA) for its entire U.S.-manufactured porcelain product line-up. The company is among the first ever recipients of this certification standard for the tile industry. TCNA developed the Green Squared certification under American National Standards Institute (ANSI) process. The multi-attribute program (ANSI A138.1) scores products in five categories of performance: product characteristics, manufacturing, corporate governance, innovation and end-of-life. Crossville's certified products and processes received stringent evaluation from Scientific Certification Systems (SCS), the green building industry's longest standing third-party certifier.



# Recycled Content

## Porcelain Tile Panels

The Crossville Porcelain Tile Panels production process emits only water vapour into the atmosphere; that production waste is reused in other applications, without exploiting more resources; and the characteristics of lightness and size of its products help to limit the environmental impacts of transport, compared to similar traditional products. The Porcelain Tile Panels have been tested by Bureau Veritas and received certifications to UNI EN ISO 14021:2021 available for review at [www.CrossvilleInc.com](http://www.CrossvilleInc.com).

BLEND			
20%	♣	L2048	Avorio
40%	♣	L1367	Grigio
40%	♣	L1510	Nero

CALCE			
20%	♣	F6373 L7013	Antracite
20%	♣	F6372 L7012	Avorio
20%	♣	F6385 L7016	Bianco
20%	♣	F6376 L6556	Grigio
40%	♣	F6379 L7015	Nero
20%	♣	L1087 L0752	Terracotta
20%	♣	F6382 L7014	Tortora

CAVA			
30%	♣	F7048 L7923 F0375	Bianco Lasa
30%	♣	F7049 L7930 F0376	Diamond Cream
50%	♣	F7046 L7940	Nero Greco
50%	♣	F7045 L7945 F0372	Noir Desire

COLLECTION			
20%	♣	L7956 L0577	Bianco Assoluto
40%	♣	L0047	Nero
20%	♣	L8938 L8643	Nero Assoluto
40%	♣	L0102	Neve

DIAMOND			
40%	♣	L1796 L1502 L1355	Calacatta Black
20%	♣	L1797 L1356	Cristallo Gold
20%	♣	L1503	Cristallo Gold Caress
20%	♣	L1795	Cristallo Macchia Vecchia

FILO			
20%	♣	L2092	Argento
40%	♣	L2879	Brina
40%	♣	L2095	Ghisa
20%	♣	L2882	Mercurio
20%	♣	L2093	Oro
40%	♣	L2880	Pece

FOKOS			
40%	♣	L0891 L0892	Grafite
20%	♣	L4879 L4338	Piombo
20%	♣	L4903 L3917	Rena
20%	♣	L4482 L3916	Roccia
20%	♣	L4489 L3914	Sale
20%	♣	L0950 L1031	Talco
20%	♣	L4496 L3915	Terra

♣ Pre-consumer recycled material in the body

Listed percentage is the **minimum** recycled content in each product. Actual recycled content may be greater

# Recycled Content

## Porcelain Tile Panels

GEMINI			
30%	♣	L2158	Acero
40%	♣	L2171	Cenere
30%	♣	L2170	Cielo
40%	♣	L2162	Flora Luce
20%	♣	L2204	Flora Pelle
20%	♣	L2156	Grano
40%	♣	L2168	Luce
20%	♣	L2160	Muschio
20%	♣	L2169	Pelle

HADO			
20%	♣	L1843 L1872	Travertine Beige
20%	♣	L1850 L1870	Travertine Bianco
20%	♣	L1856 L1873	Travertine Noce
20%	♣	L1841 L1871	Travertine Silver

KI NO BI			
20%	♣	L3082	Acai
20%	♣	L3086	Enoki
20%	♣	L3083	Kuri
20%	♣	L3081	Sugi

I NATURALI			
40%	♣	L9767	Ardesia a Spacco Bianco
40%	♣	L9758	Ardesia a Spacco Nero
20%	♣	L8751 L0797	Calacatta Michelangelo
20%	♣	L7297 L6093 L0318	Calacatta Oro Venato
20%	♣	L2554 L1507	Calacatta Viola
40%	♣	L5136 L5253	Pietra Di Savoia Antracite
20%	♣	L6189 L5905	Pietra Di Savoia Avorio
20%	♣	L4968 L4552	Pietra Di Savoia Grigia
20%	♣	L5254 L5135	Pietra Di Savoia Perla
20%	♣	L7951 L7947	Pietra Gray

I NATURALI (cont'd)			
40%	♣	L1202 L0646	Sahara Noir
20%	♣	L7954 L8935 L0575	Statuarietto
20%	♣	L0798	Statuario Altissimo
20%	♣	L7298 L5778 L0319	Statuario Venato
20%	♣	L2224	Travertino Avorio
20%	♣	L8705	Travertino Grigio Venato
20%	♣	L5791 L4959	Travertino Navona
20%	♣	L0651 L1205	Verde Alpi

IN-SIDE			
20%	♣	L9443 L9445	Pietra Di Cardoso Grigio
40%	♣	L9447 L9449	Pietra Di Cardoso Nero
20%	♣	L9435 L9437	Pietra Piasentina Grigio
20%	♣	L9439 L9441	Pietra Piasentina Taupe
30%	♣	L9451 L9453	Porfido Marrone
20%	♣	L1057 L1060	Terra Di Matera
20%	♣	L1074 L1075	Terra Di Pompei
20%	♣	L1067 L1070	Terra Di Saturni

LEGNO VENEZIA			
30%	♣	L0727 L0725	Noce
20%	♣	L7180 L7128	Sabbia

♣ Pre-consumer recycled material in the body

Listed percentage is the **minimum** recycled content in each product. Actual recycled content may be greater

# Recycled Content Porcelain Tile Panels

OSSIDO			
30%	♣	L7028 L7031	Bruno
50%	♣	L7027 L7032	Nero
20%	♣	L9962 L9960	Verderame

OXIDE			
20%	♣	L2012	Avorio
30%	♣	L3439 L4382	Bianco
30%	♣	L1462	Moro
50%	♣	L1461	Nero
30%	♣	L2013	Perla

RARE			
30%	♣	L3065 L3068	Marfil
30%	♣	L3094	Mont Blanc
30%	♣	L3106	Perlino Bianco
30%	♣	L3095	Perlino Rosa
30%	♣	L3092	Pietra Di Gre'
30%	♣	L3093	Pietra Di Gre' Fine
30%	♣	L3096	Rapolano
30%	♣	L3069 L1544 L3070	Taj Mahal

SETA			
50%	♣	F7465	Liquorice
30%	♣	F7467	Oro



♣ Pre-consumer recycled material in the body

Listed percentage is the **minimum** recycled content in each product. Actual recycled content may be greater